

LOG 2.0 – Data Acquisition Toolchain

Real-world vehicle data, automatically captured and cloud-ready

When developing and validating vehicle functions, real-world data is crucial. It is challenging to design an effective data acquisition equipment, assure a secure data storage and pre-process the data. That's where our LOG 2.0 comes in - a reliable solution designed to tackle these challenges head-on. Whether you need a long-term embedded setup or a short-term mobile solution for a specific issue, we'll find the right approach for you.



Proven in VW Group

Developed within a strategic cooperation between Digiteq Automotive and Škoda Auto (GQD-3), deployed in the Škoda quality department test fleet and VW Commercial Vehicles; also used to support after-sales and end-customer warranty claim resolution.

LOG 2.0 setup

The LOG 2.0 setup is built up from ready-to use components as well as internally developed solutions. The final setup is adjusted according to the customer needs and a customer specific configuration is delivered.

The setup allows long-term complex data recording as well as partial over the air data transfer to the cloud for pre-analysis. Thanks to the 5G connection, data is available from any location abroad.



Key features

- HMI context of interior displays recorded
- Vocal failure description enabled
- Continuous self-check of the setup's proper function assured
- Allows predictive maintenance of the measure setup
- Scalable and modular solution
- Public roads safe installation. Possibly partially hidden based on customer requirements
- Suited for both predev- and series vehicles

Cloud

Defined part of the data is transferred to cloud storage, pre-processed for convenient analysis and fully accessible to customer use. Cloud infrastructure supports various functionalities.

Key features:

✓ **E-mail based notification service**, that informs users about vehicle and measurement setup related events.

- New data available on cloud
- Measurement setup status (trigger events, failure warnings, full memory...)
- Vehicle status (ECU fault, battery soon to be discharged...)

✓ **PowerBI dashboards** may be implemented

✓ **Cloud infrastructure supports integration** of both in-house and 3rd party tools. For example:

- Data conversion and processing utilities
- Machine-learning models/classifiers
- Audio/Video extraction and processing utilities for in-vehicle displays and 360° cameras

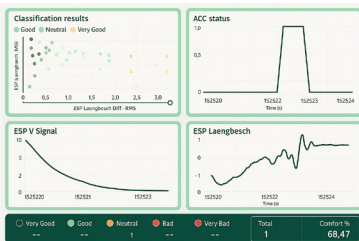
✓ **Secured data transfer** from vehicle to the cloud is established

✓ **Customer-specific settings of cloud infrastructure** may be adjusted:

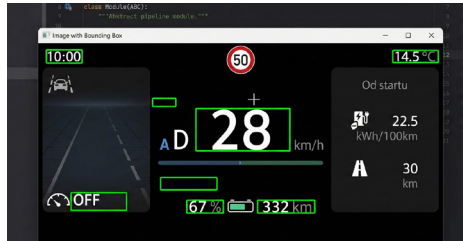
- RAW data conversion
- Converted data postprocessing tools
- Data storage, backup and recovery options

✓ **ISO 27001 compliant**

Examples of the in-house data processing tools



Signal processing machine learning classifier example.



In-car screens scrapping.



Top View cameras video extractor.

CURRENT CUSTOMERS

SKODA

Warranty Claims
E-Feld team

C A R I A D
A VOLKSWAGEN GROUP COMPANY



Commercial Vehicles

NQ-PE

CONTACT

Jakub Vít | Solution Architect
jakub.vit@digiteqautomotive.com

Jan Fridrich | Delivery
jan.fridrich@digiteqautomotive.com

More about LOG 2.0



www.digiteqautomotive.com

